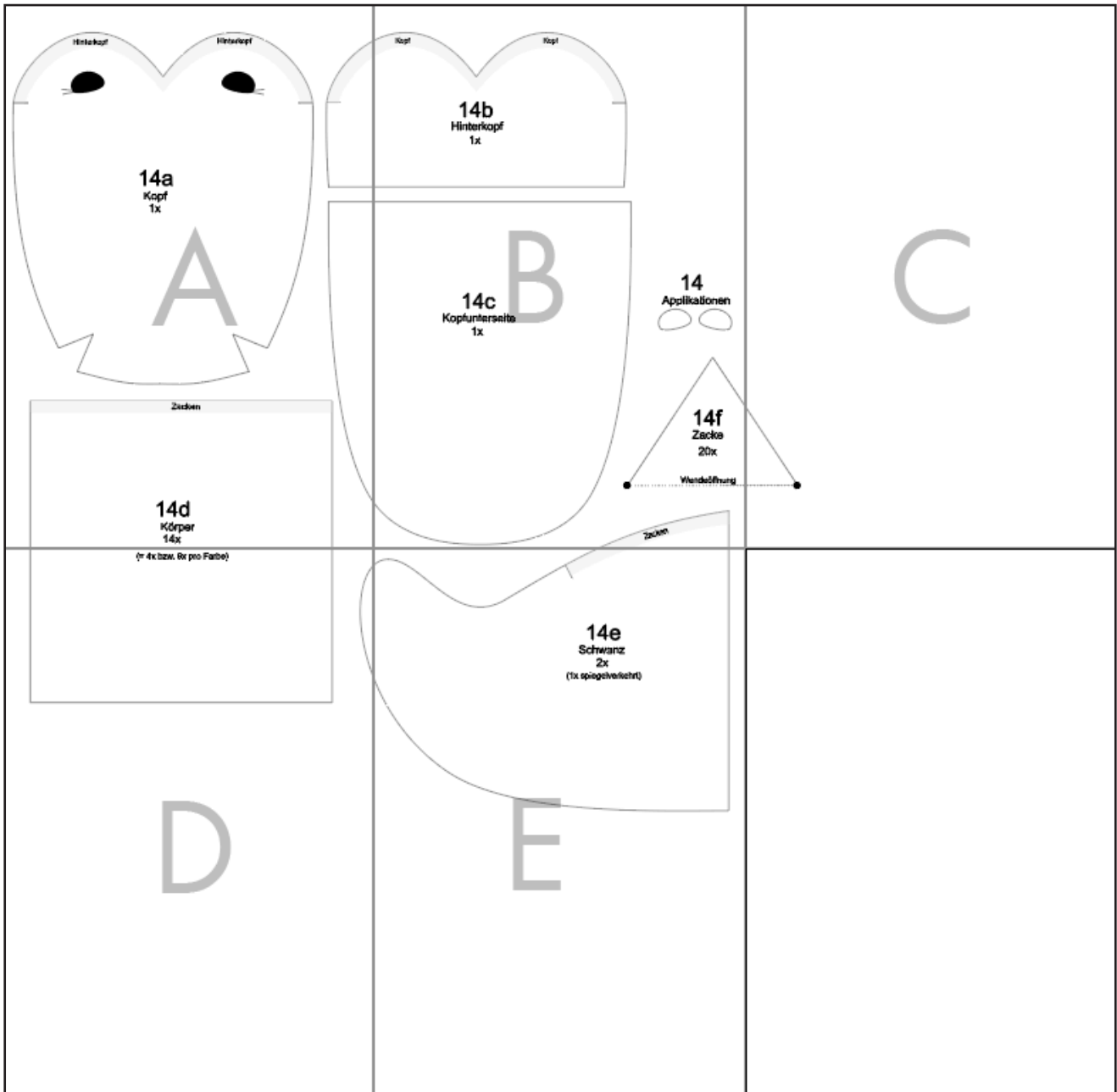


# KROKO-KISSENROLLE

## SCHNITTMUSTER-ÜBERSICHT

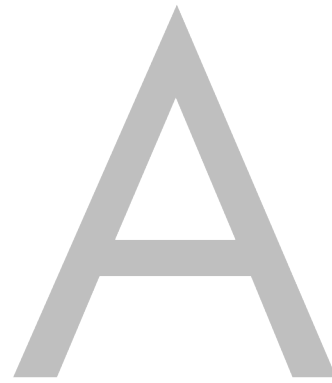


Hinterkopf

Hinterkopf

14a

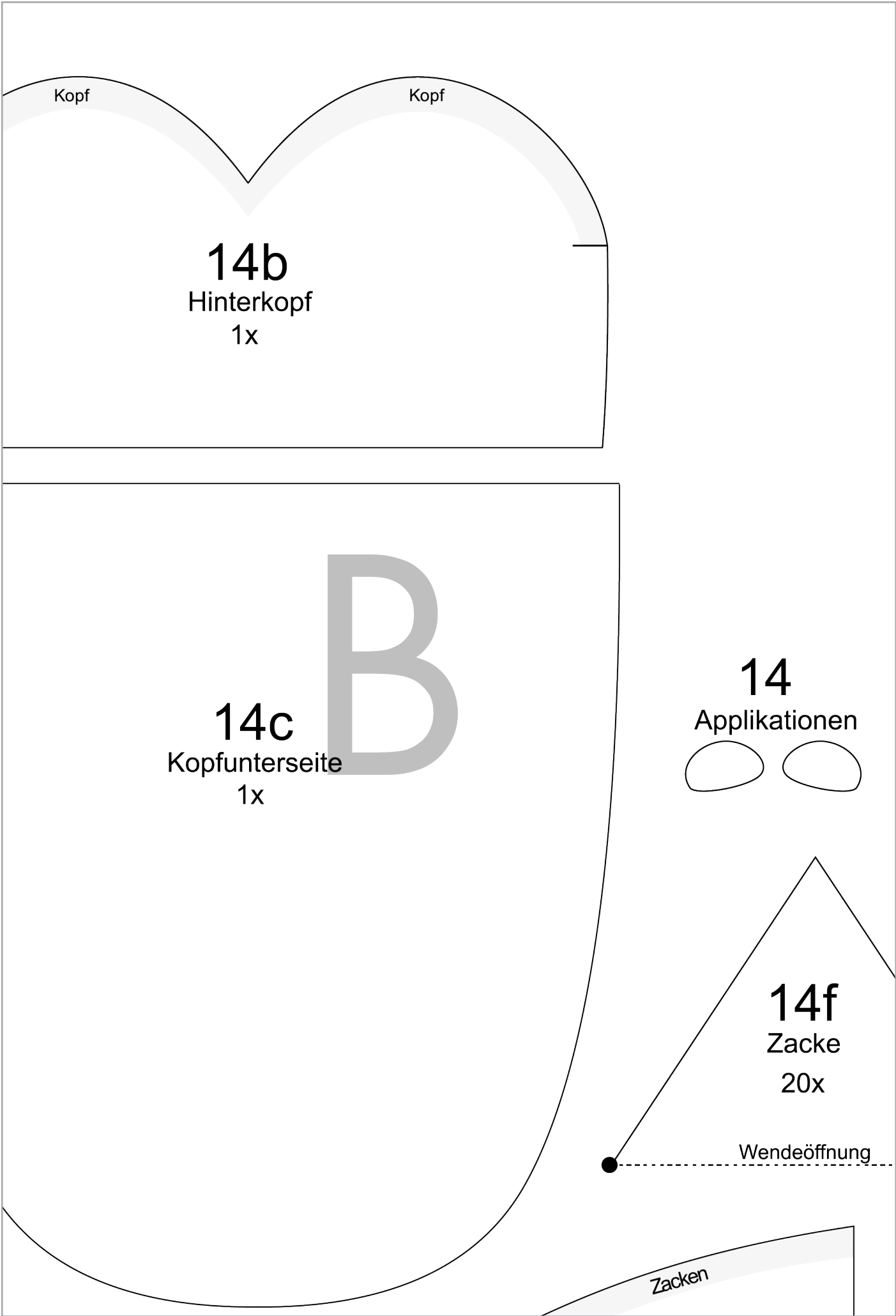
Kopf  
1x



Zacken

14d

Körper  
14x



Kopf

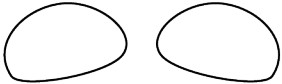
Kopf

**14b**  
Hinterkopf  
1x

**14c**  
Kopfunterseite  
1x

**B**

**14**  
Applikationen

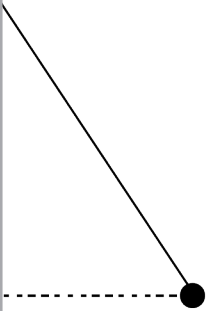


**14f**  
Zacke  
20x

Wendeöffnung

Zacken

C



(= 4x bzw. 6x pro Farbe)

D



14e

Schwanz

2x

(1x spiegelverkehrt)